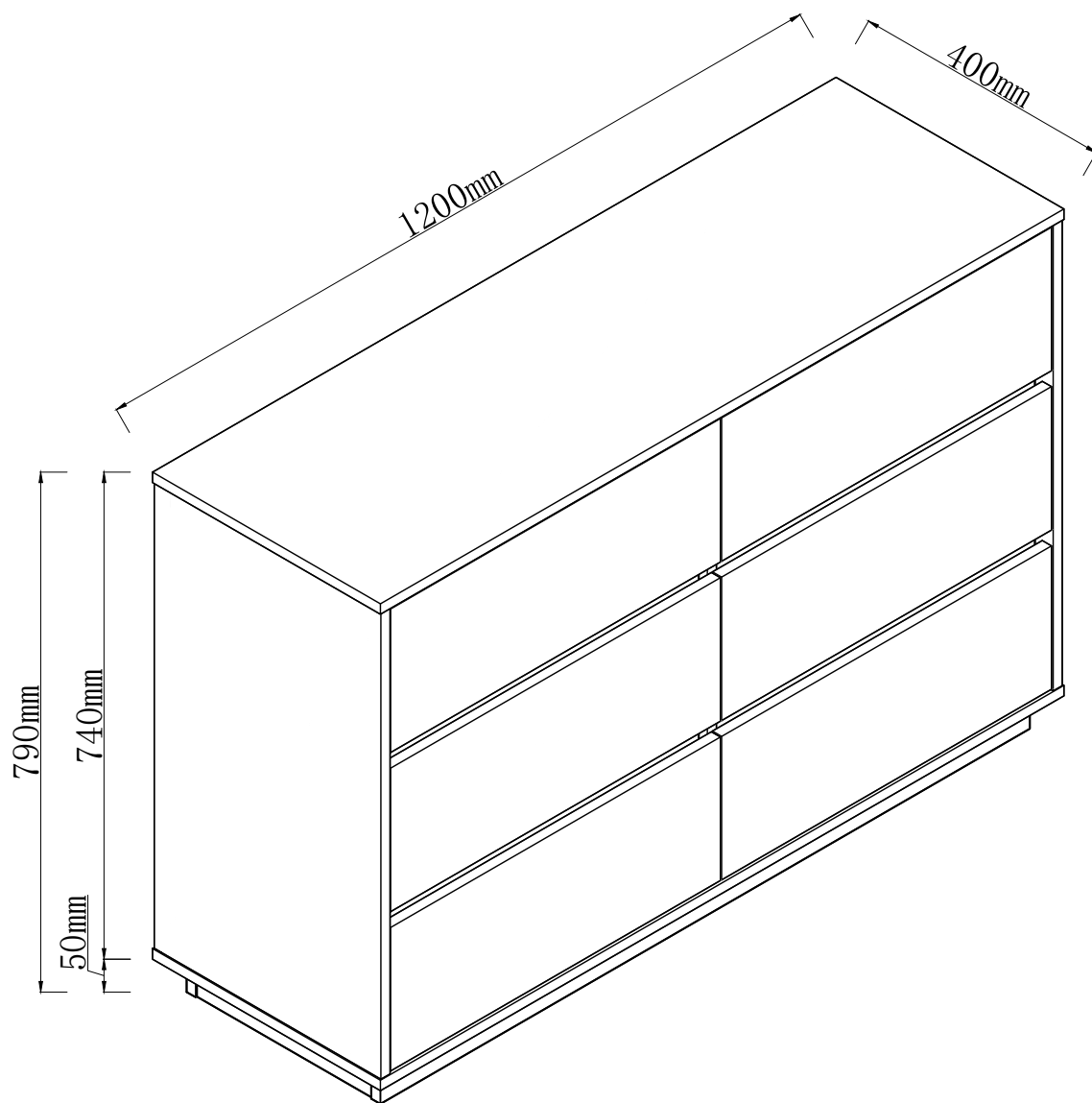
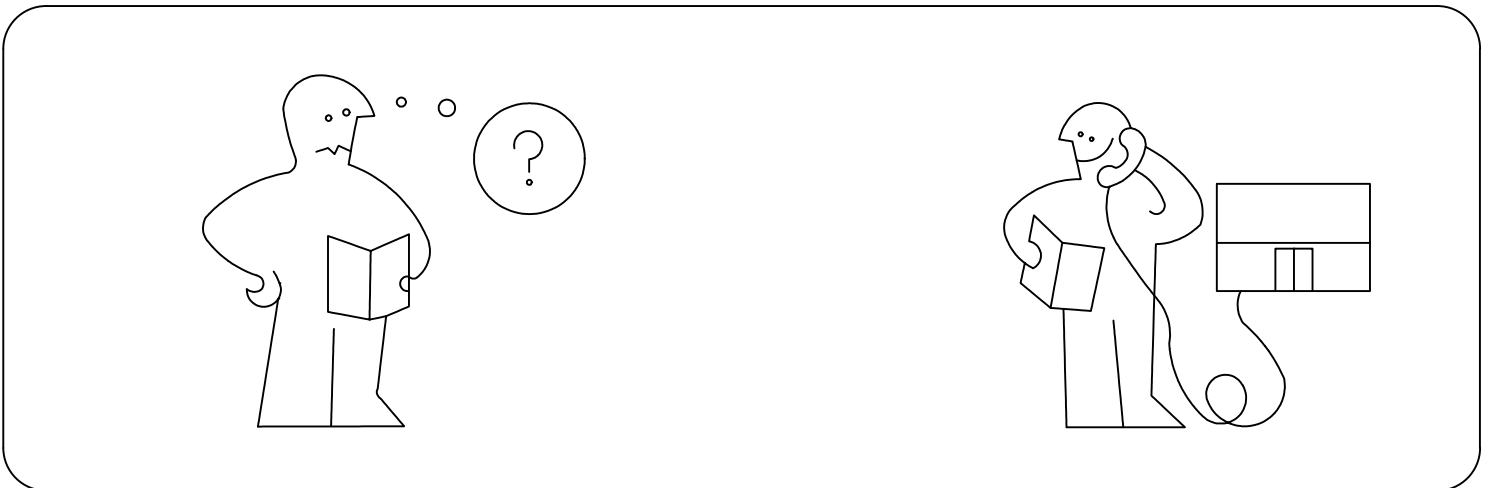
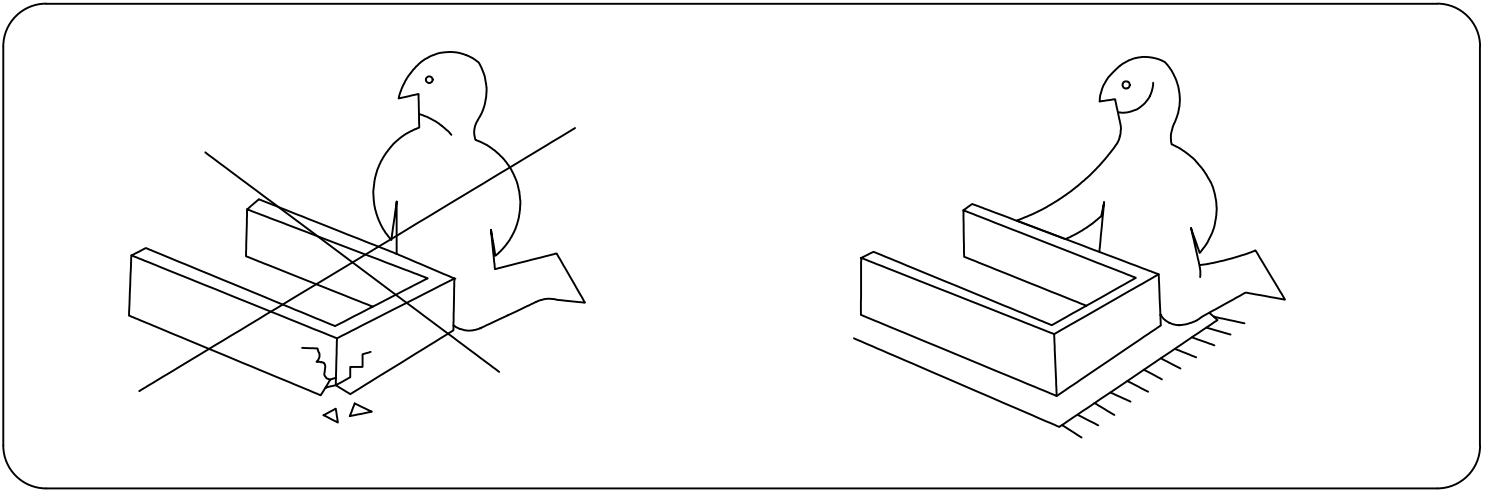
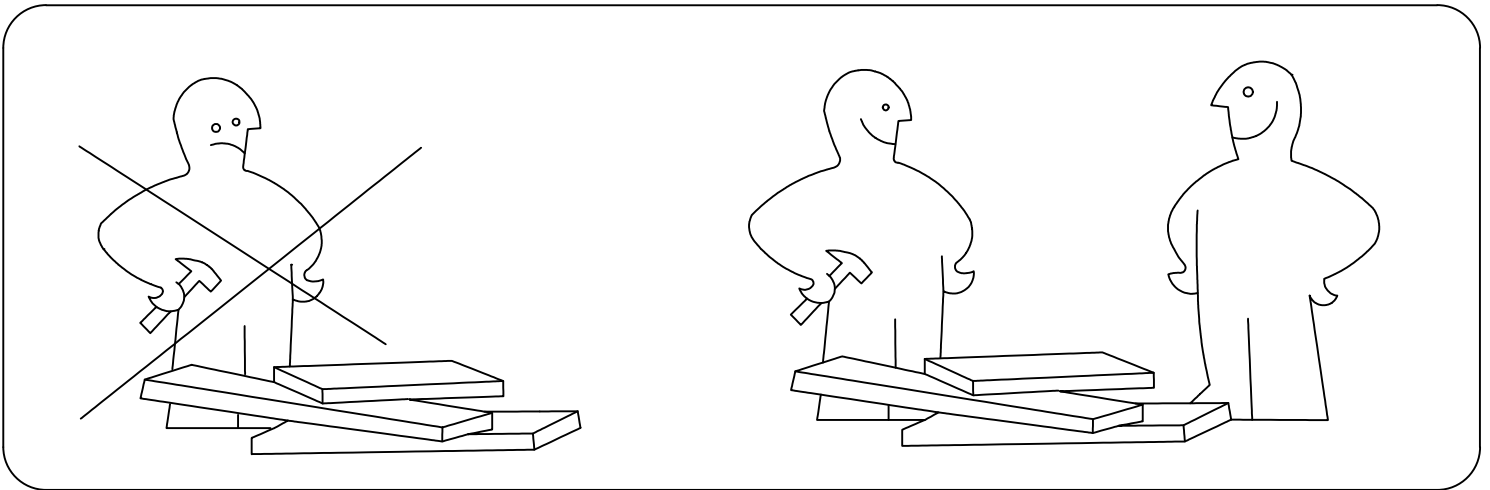
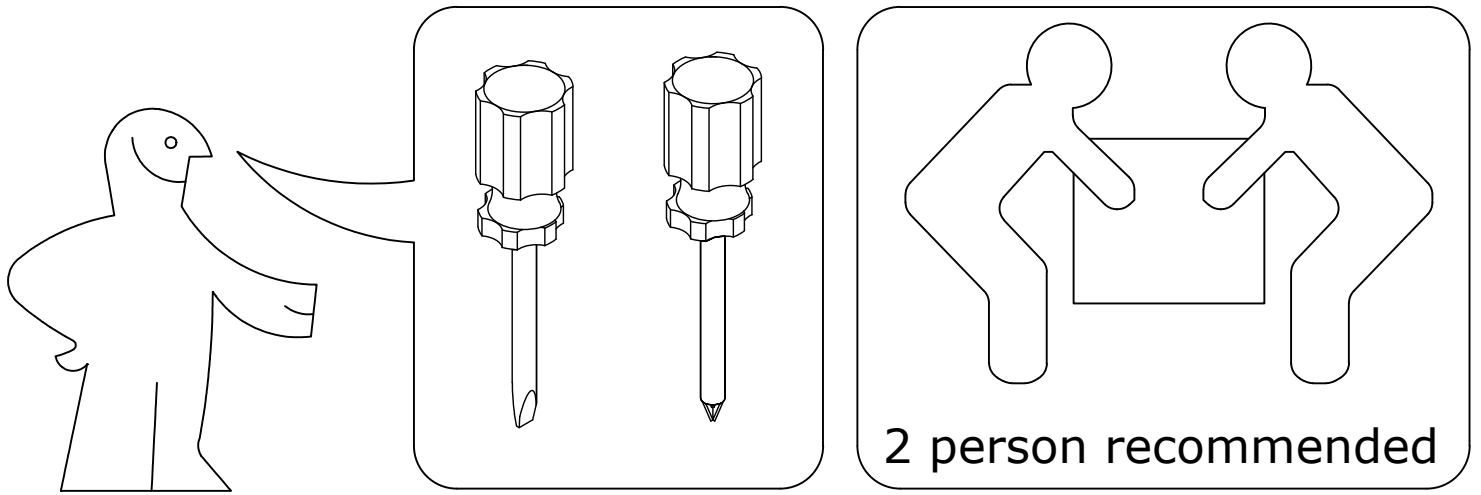




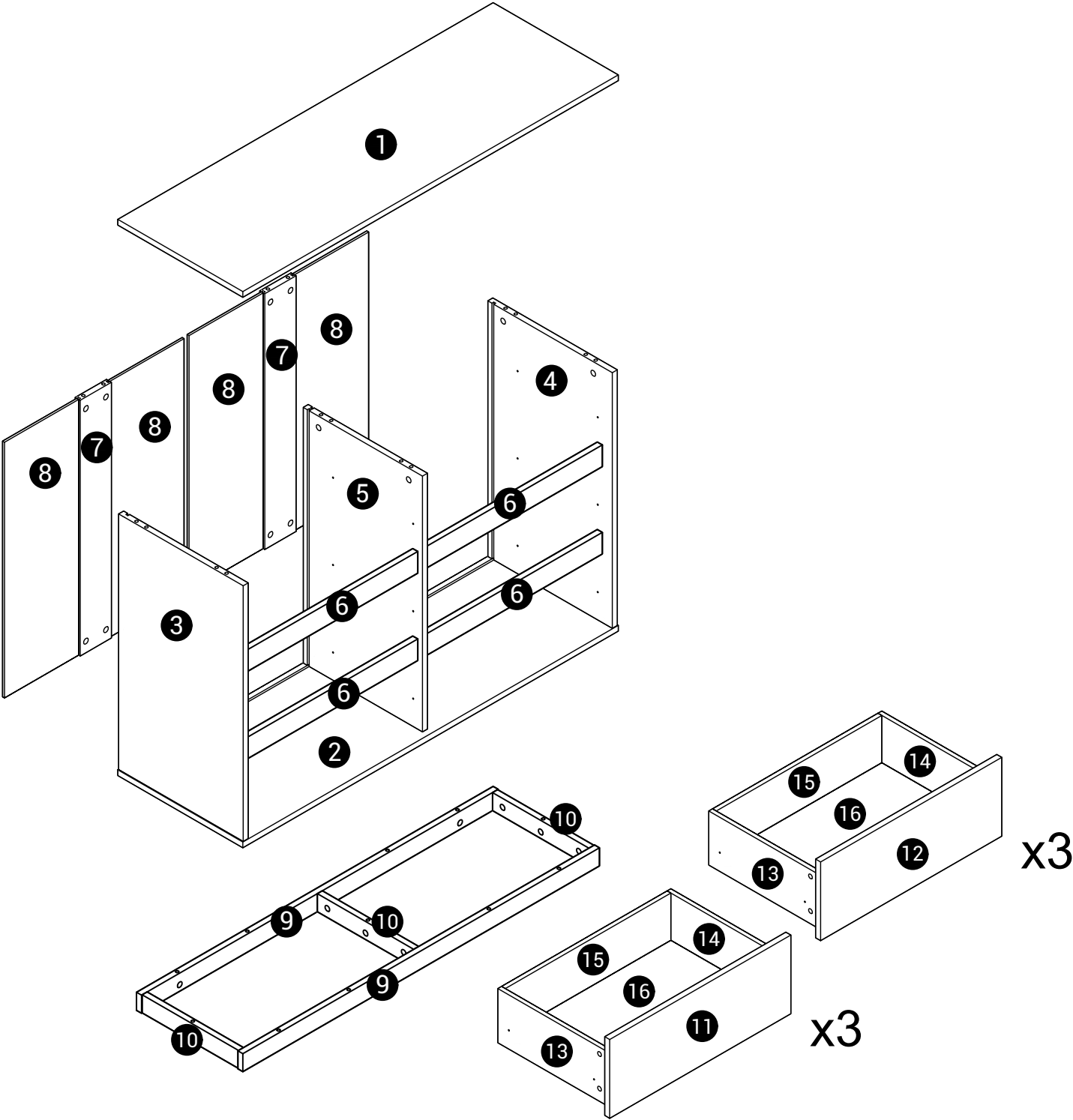
Assembly Instruction



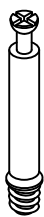


Panel No	Panel Sizes	Quantity
1	1200*400*16	1
2	1200*400*16	1
3	708*398*16	1
4	708*398*16	1
5	708*381*16	1
6	574*60*16	4
7	708*100*16	2
8	718*247*5	4
9	1140*50*16	2
10	308*50*16	3

Panel No	Panel Sizes	Quantity
11	579*218*16	3
12	579*218*16	3
13	350*150*12	6
14	350*150*12	6
15	529*150*12	6
16	539*348*5	6



Fittings



A=35



B=24



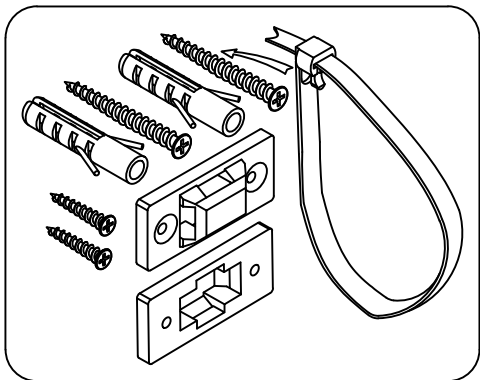
C=35



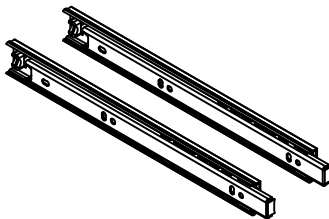
D=83



E=16



F=1



N=6



H=1



O=48

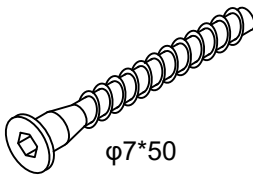


P=48



M3.5*12

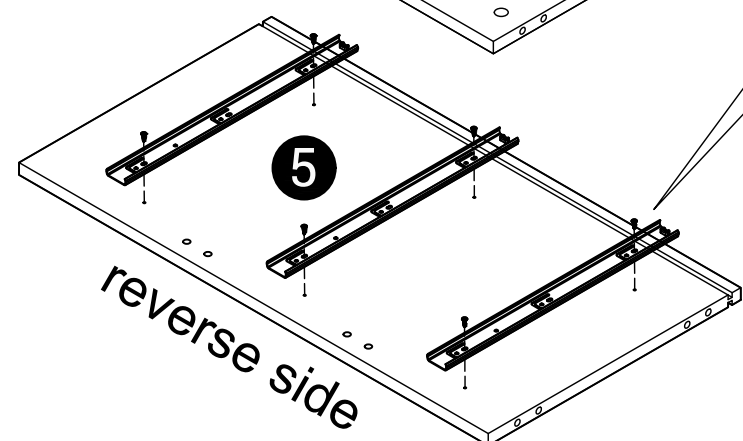
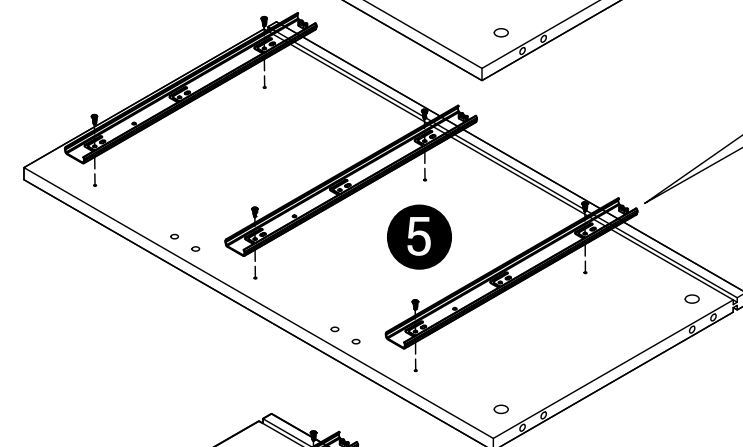
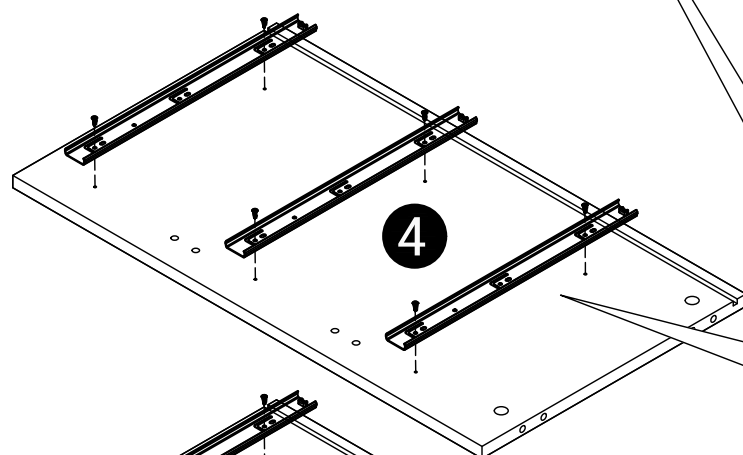
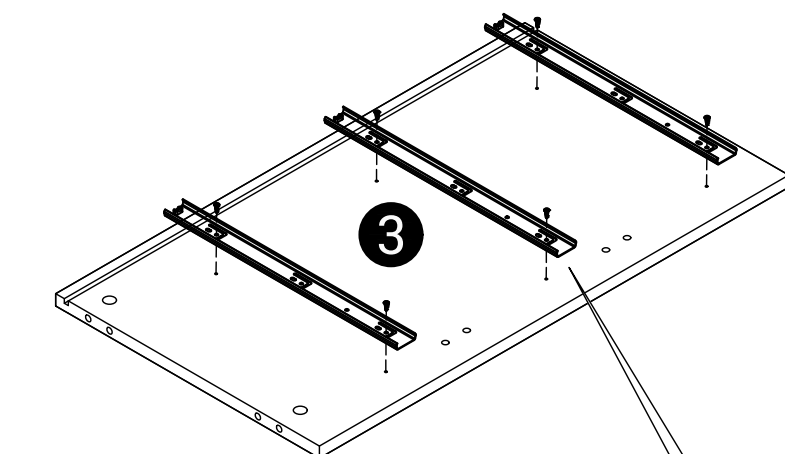
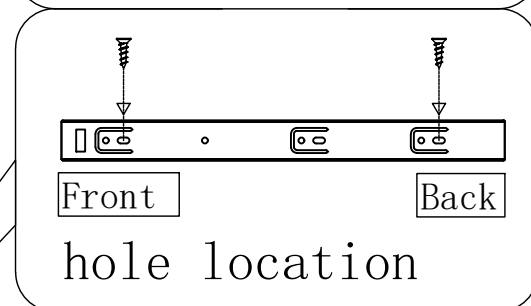
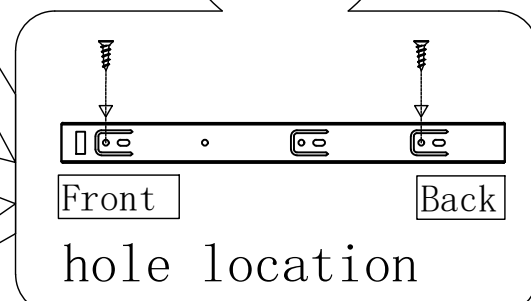
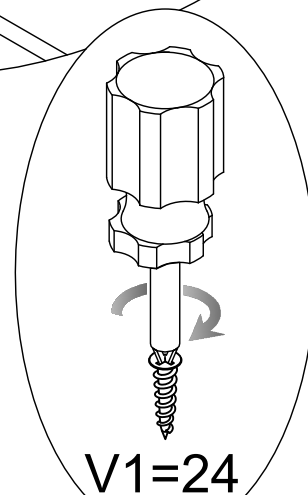
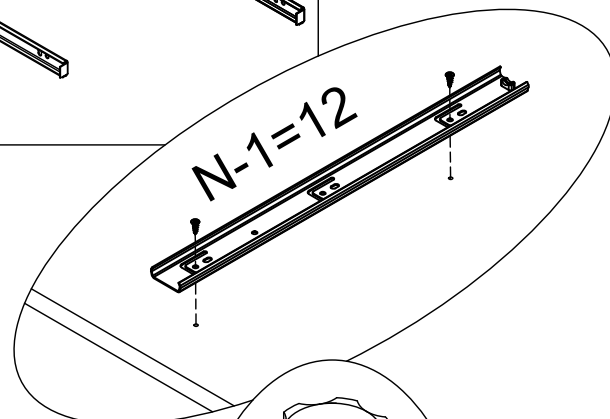
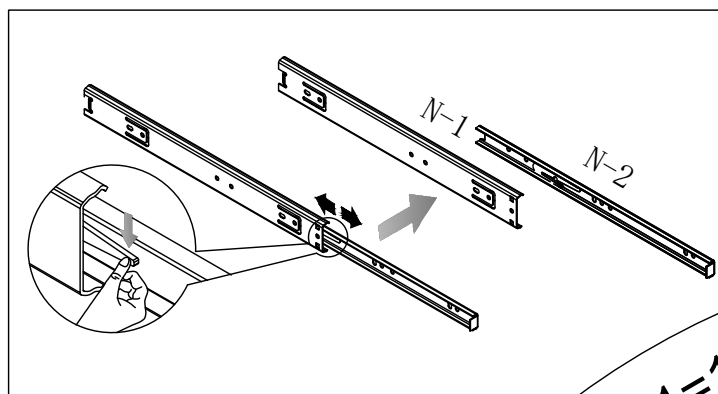
V1=48



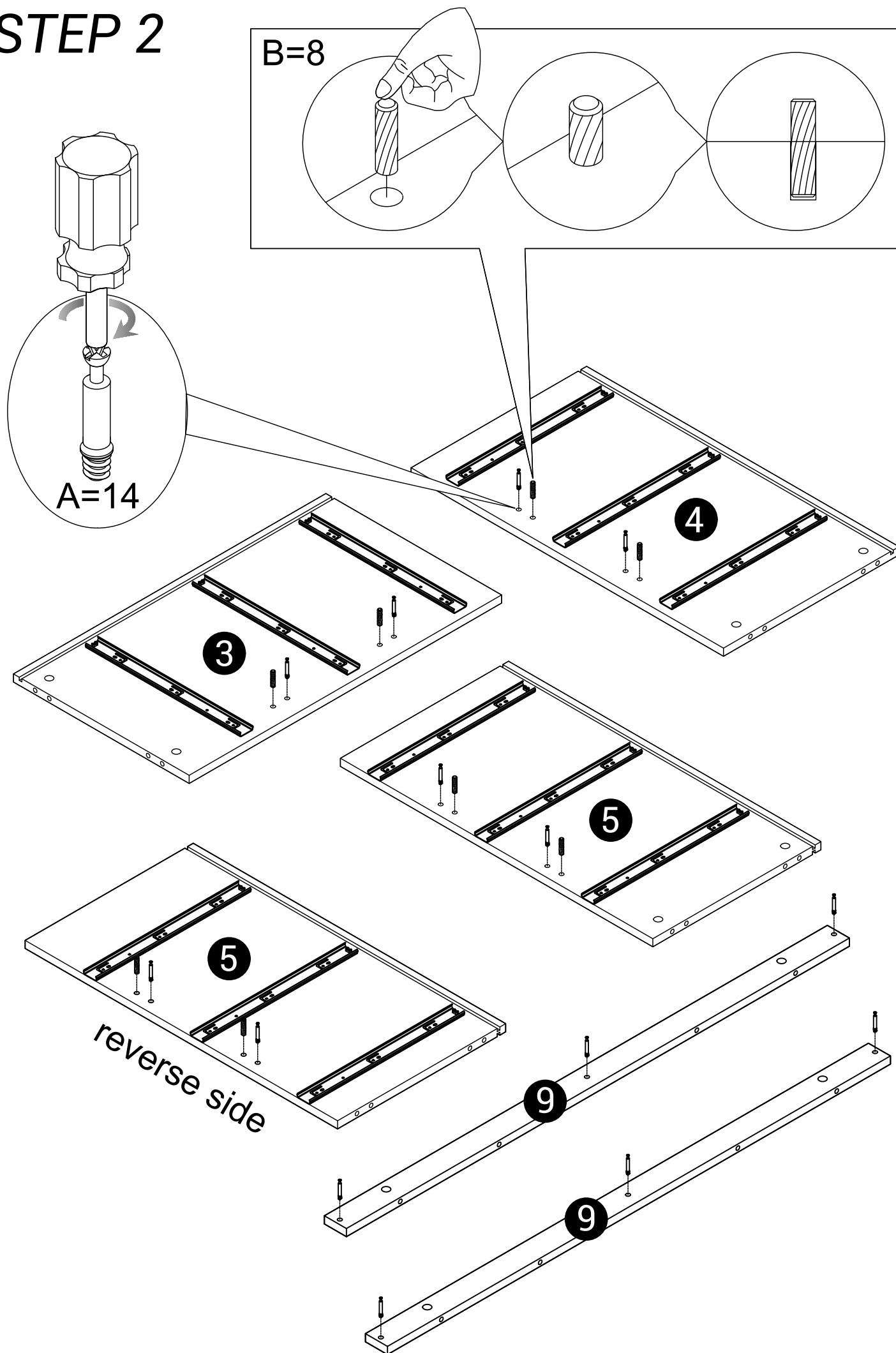
$\phi 7 \times 50$

Q=6

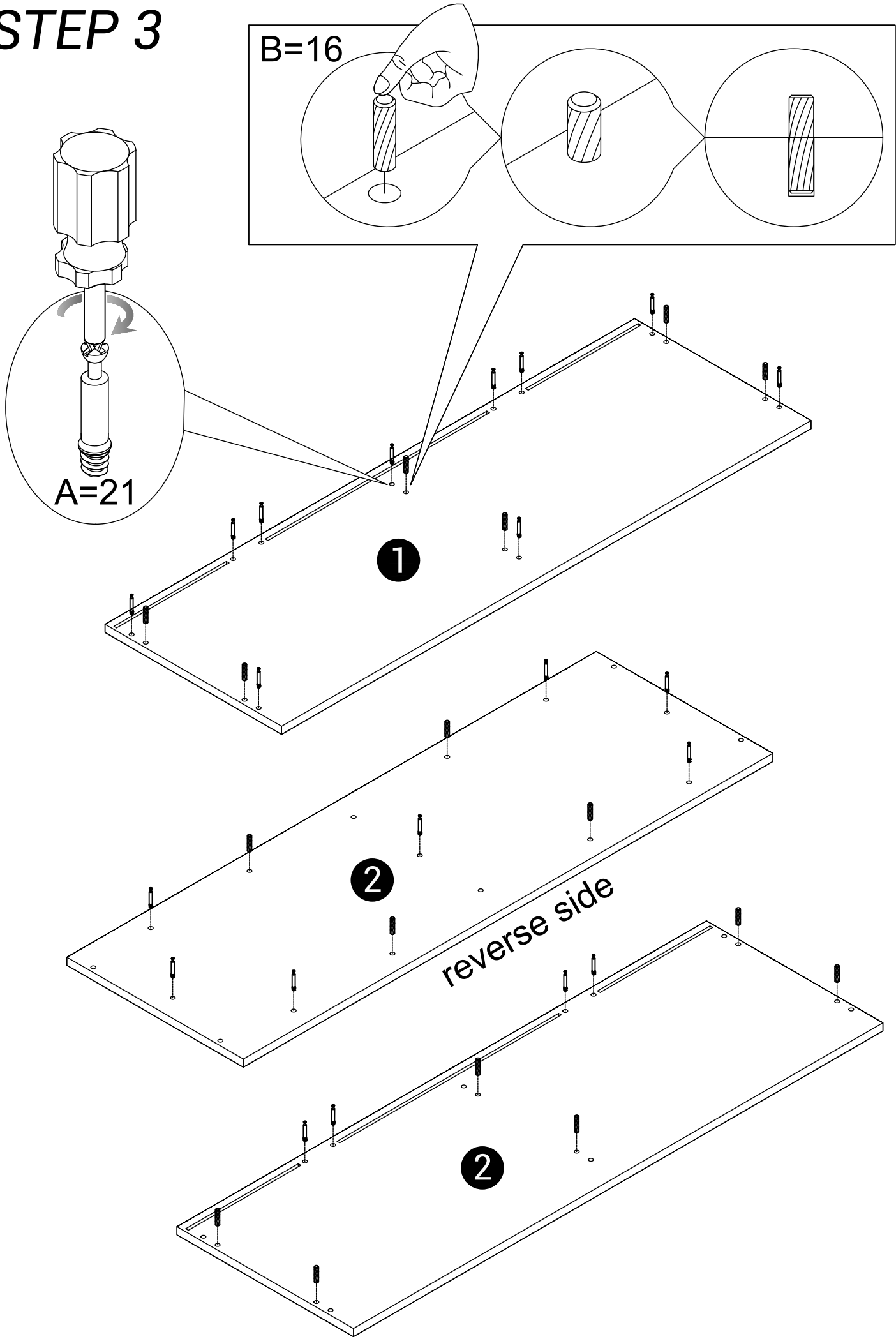
STEP 1



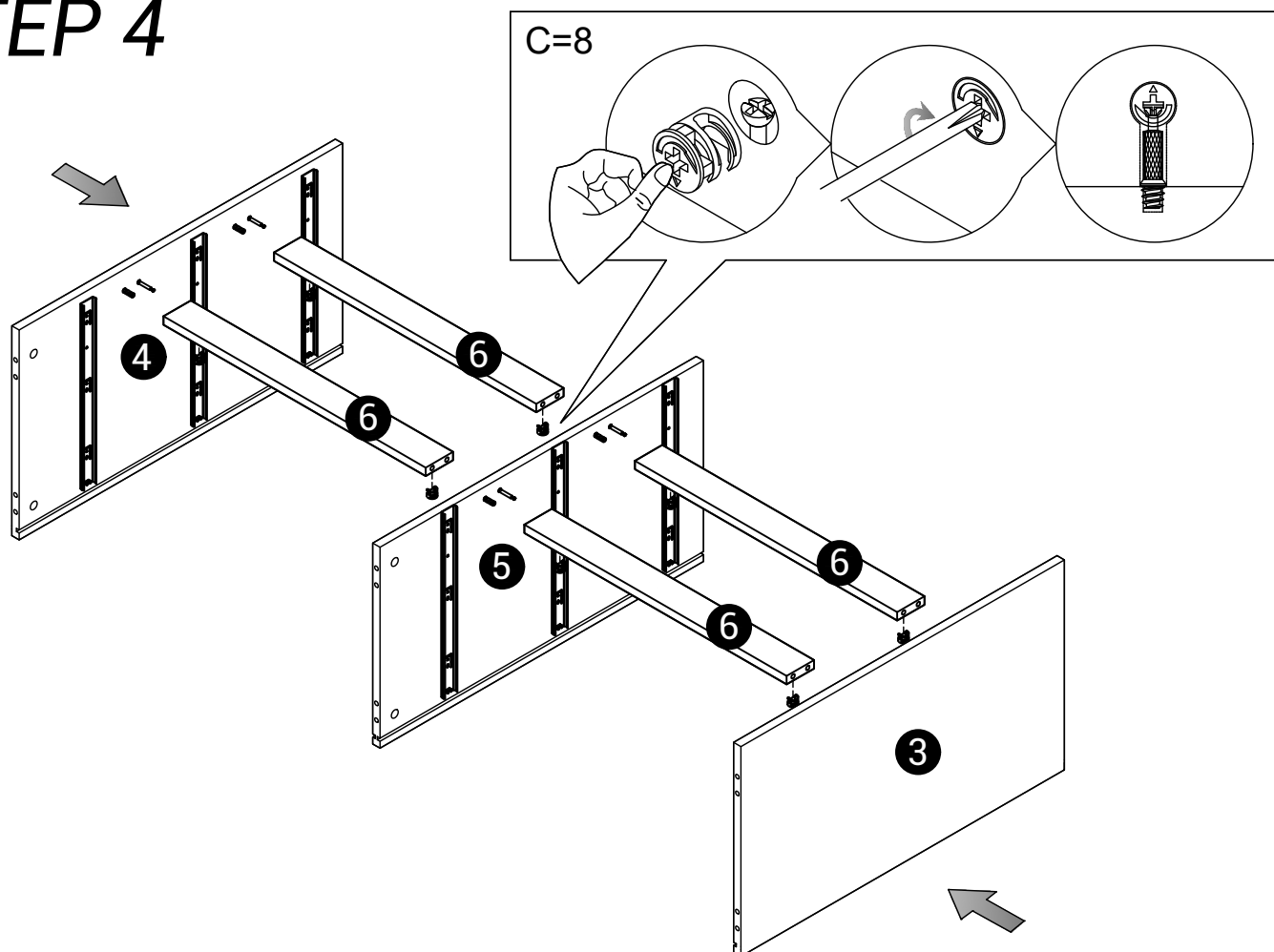
STEP 2



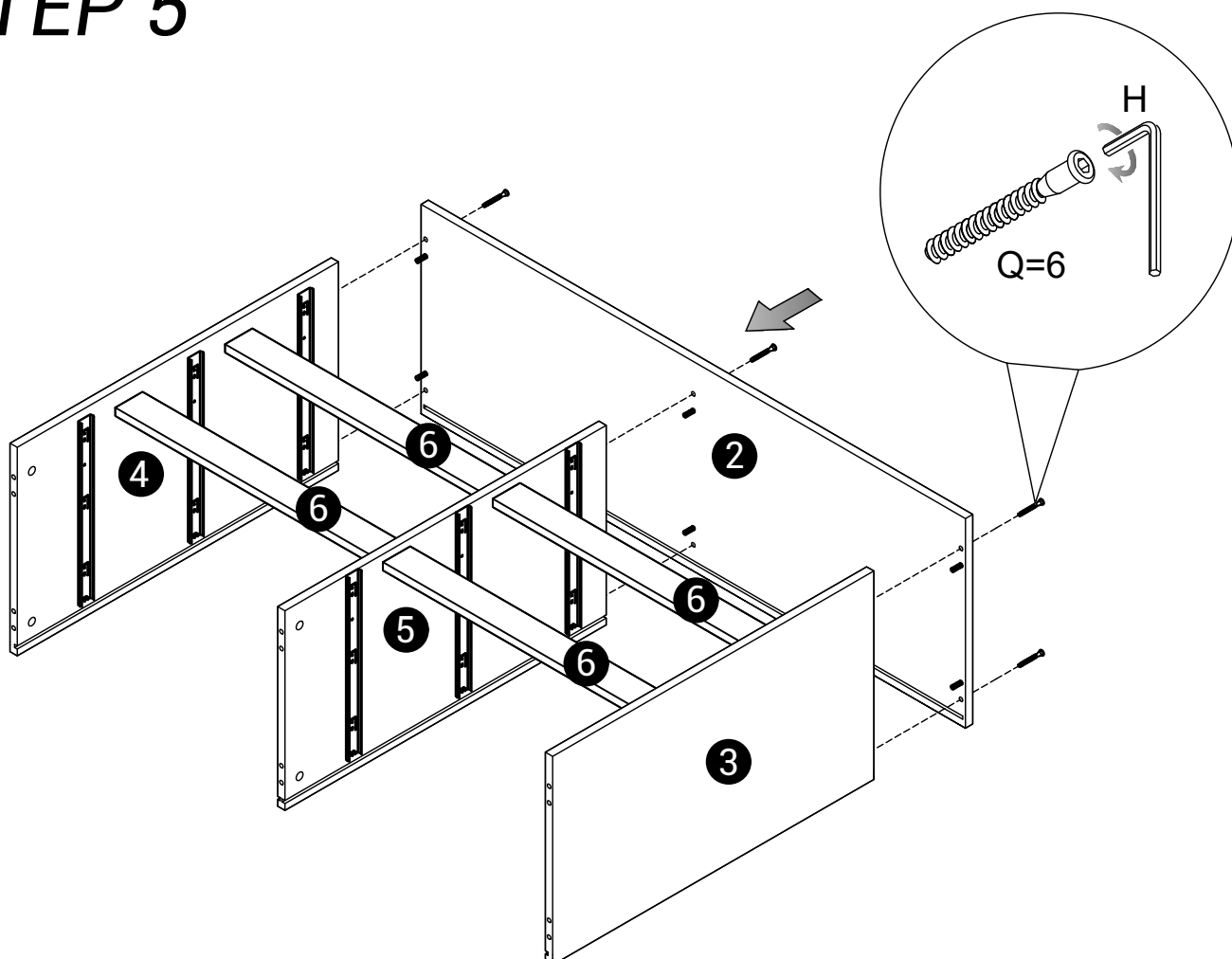
STEP 3



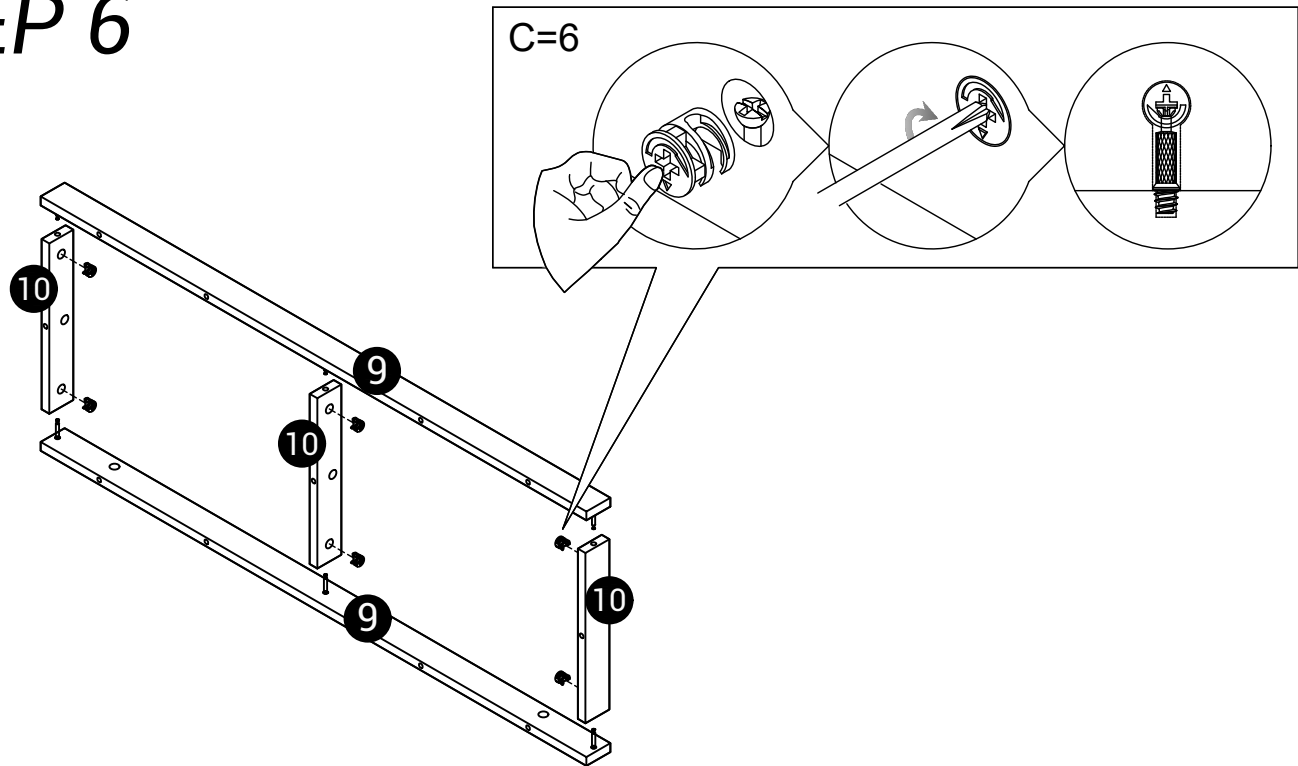
STEP 4



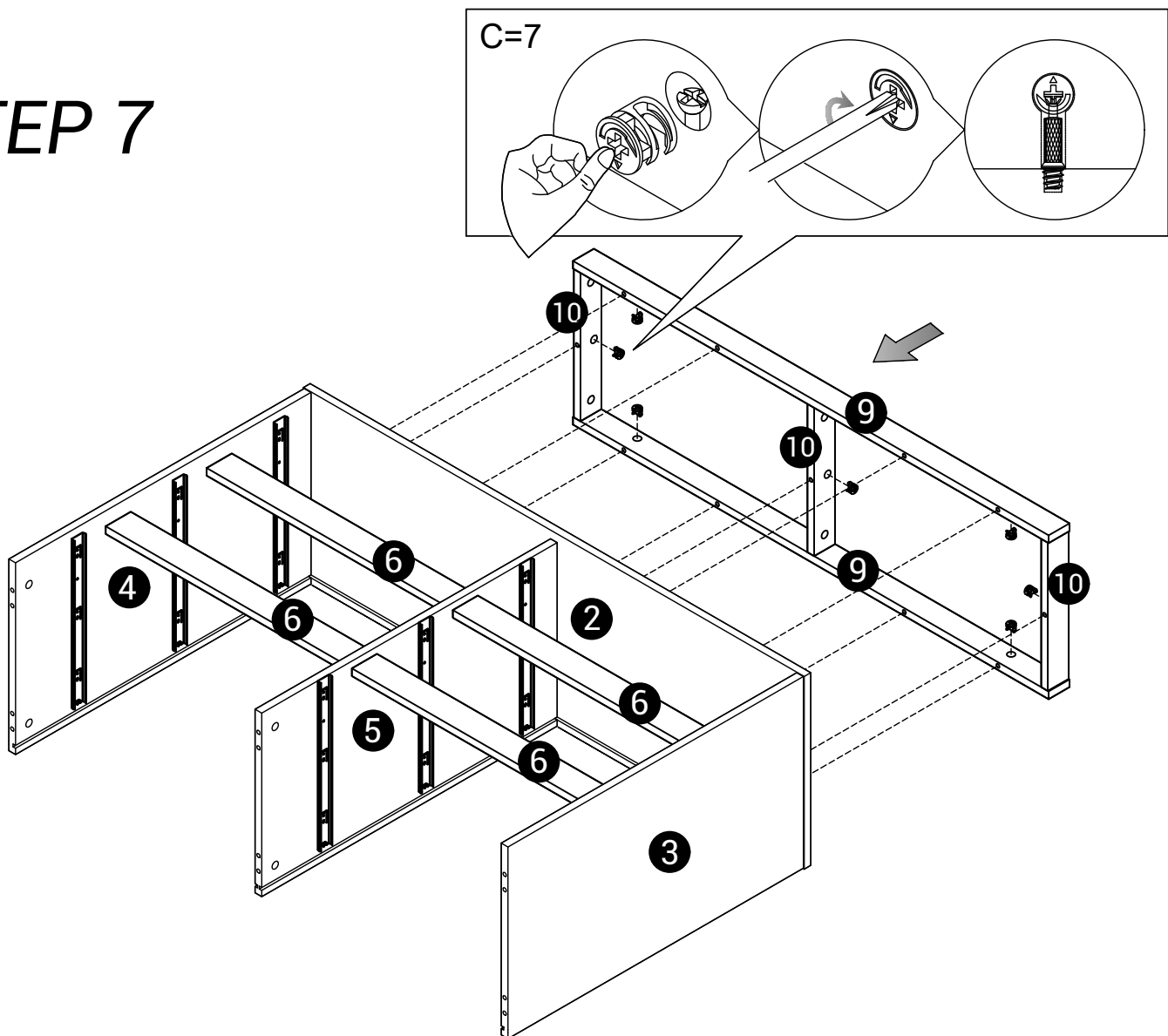
STEP 5



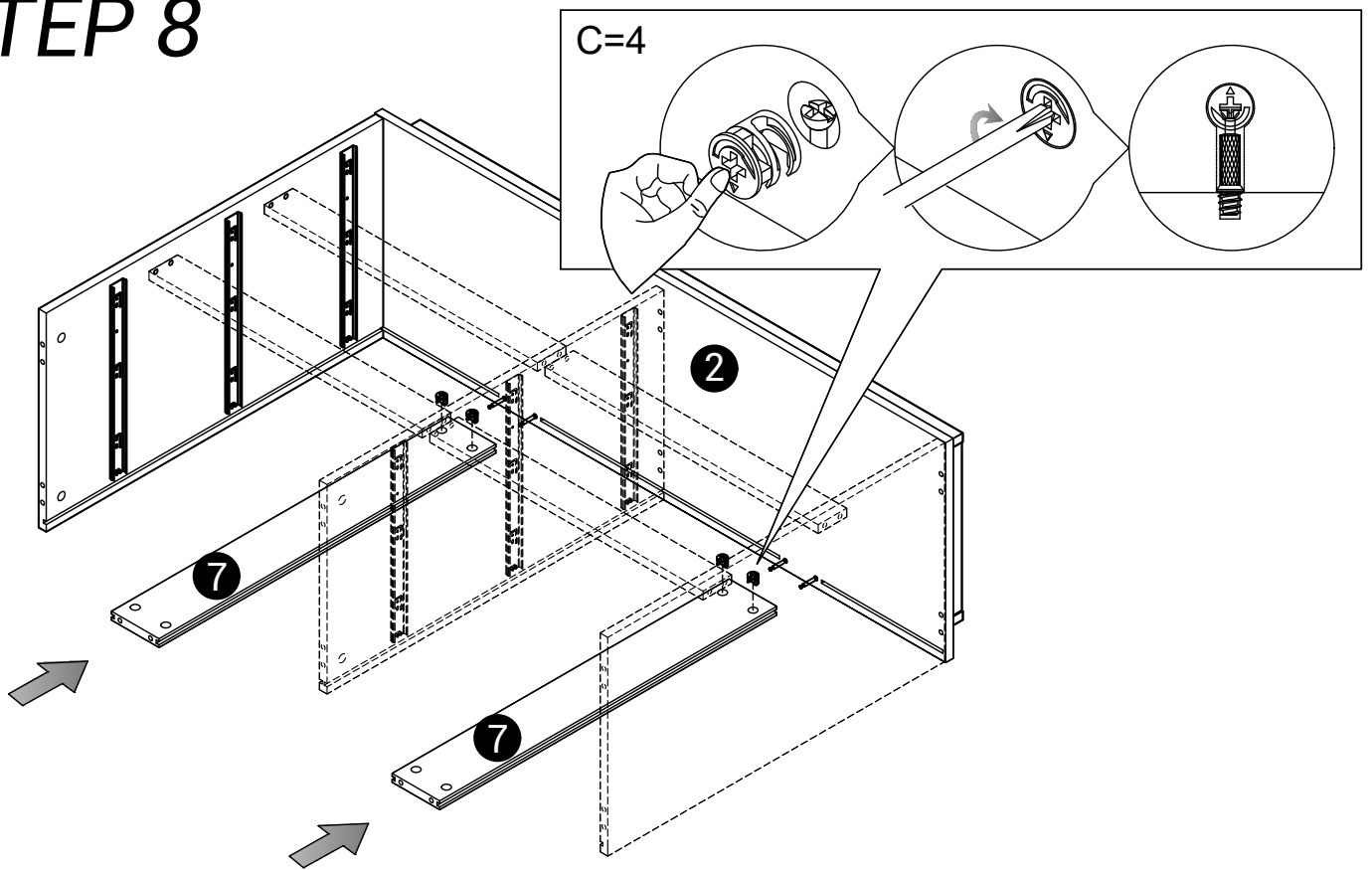
STEP 6



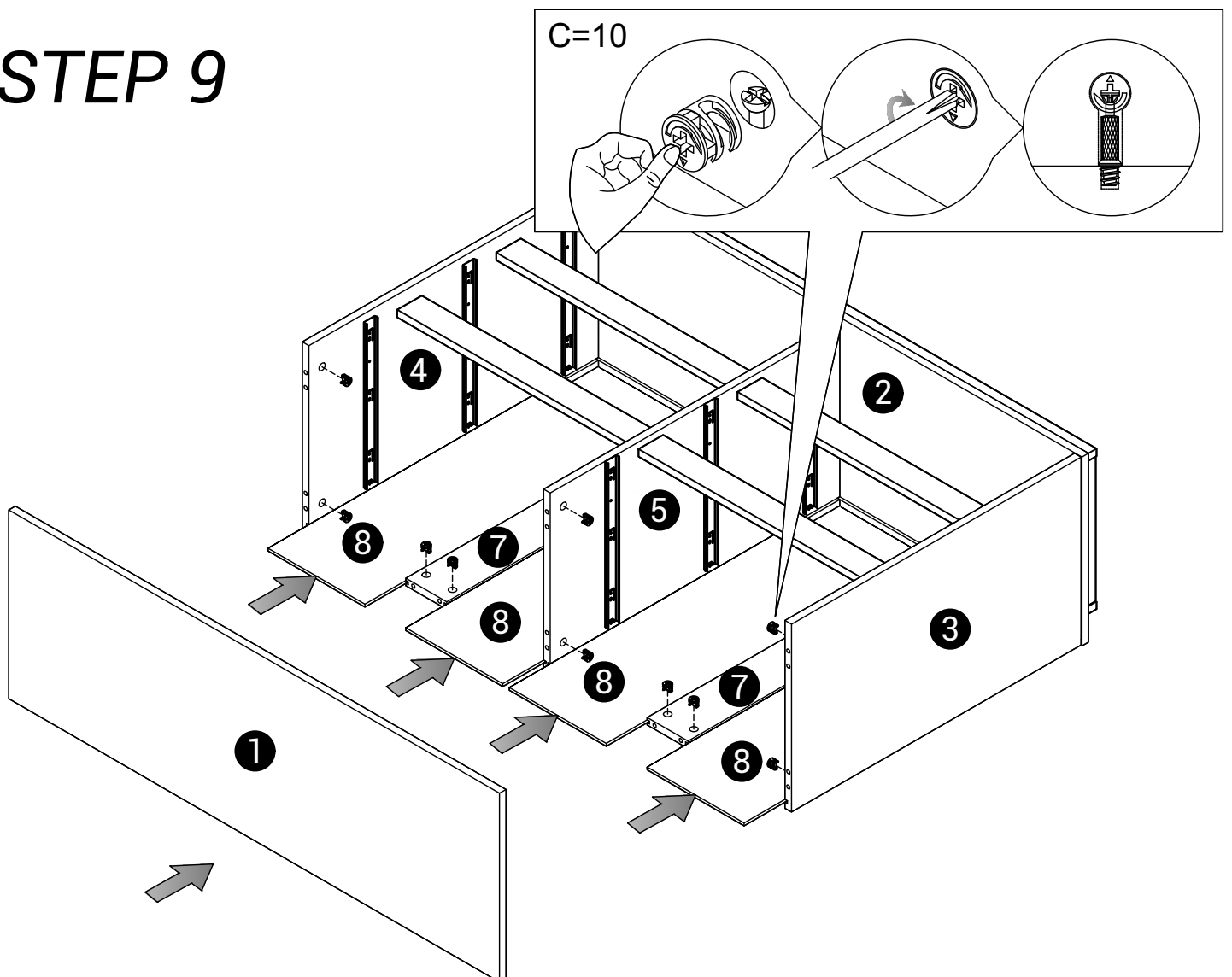
STEP 7



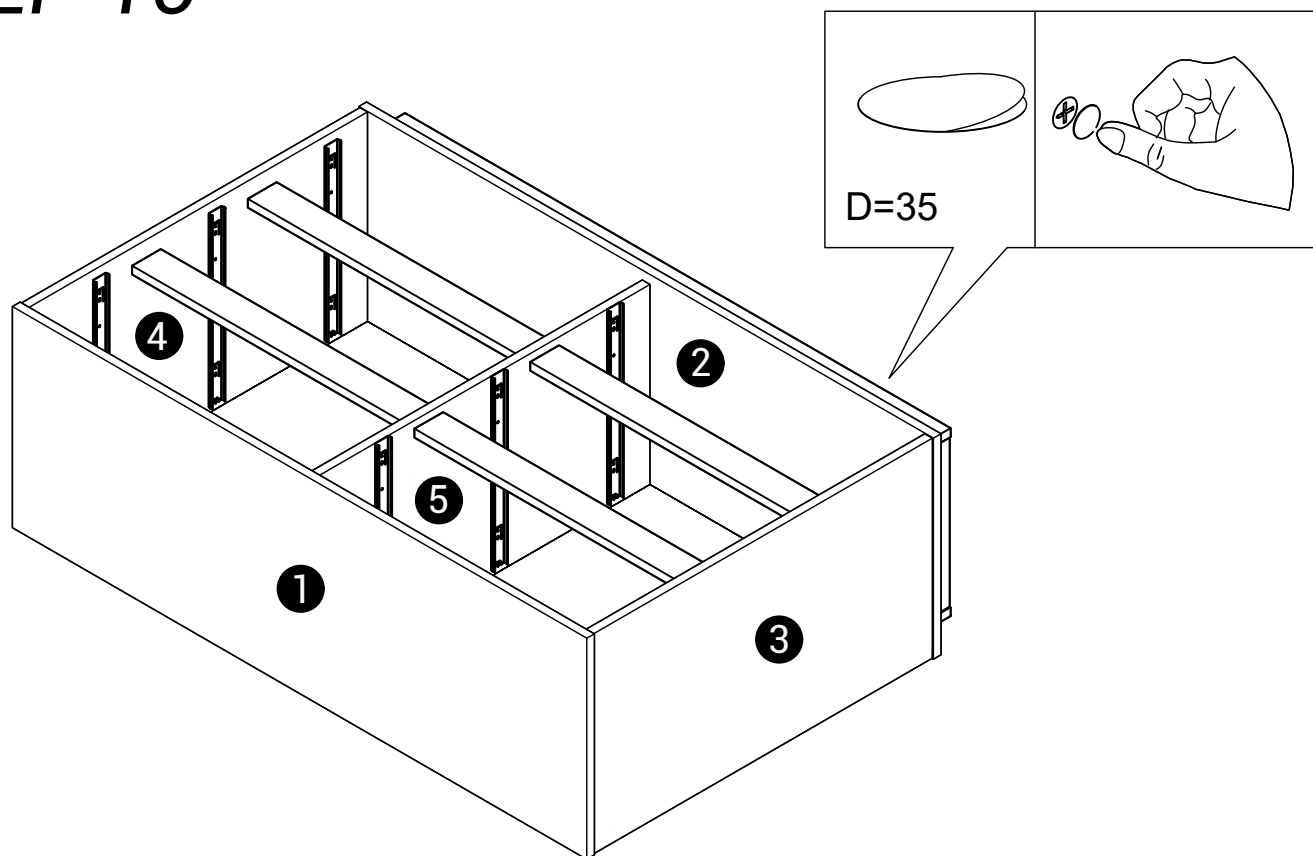
STEP 8



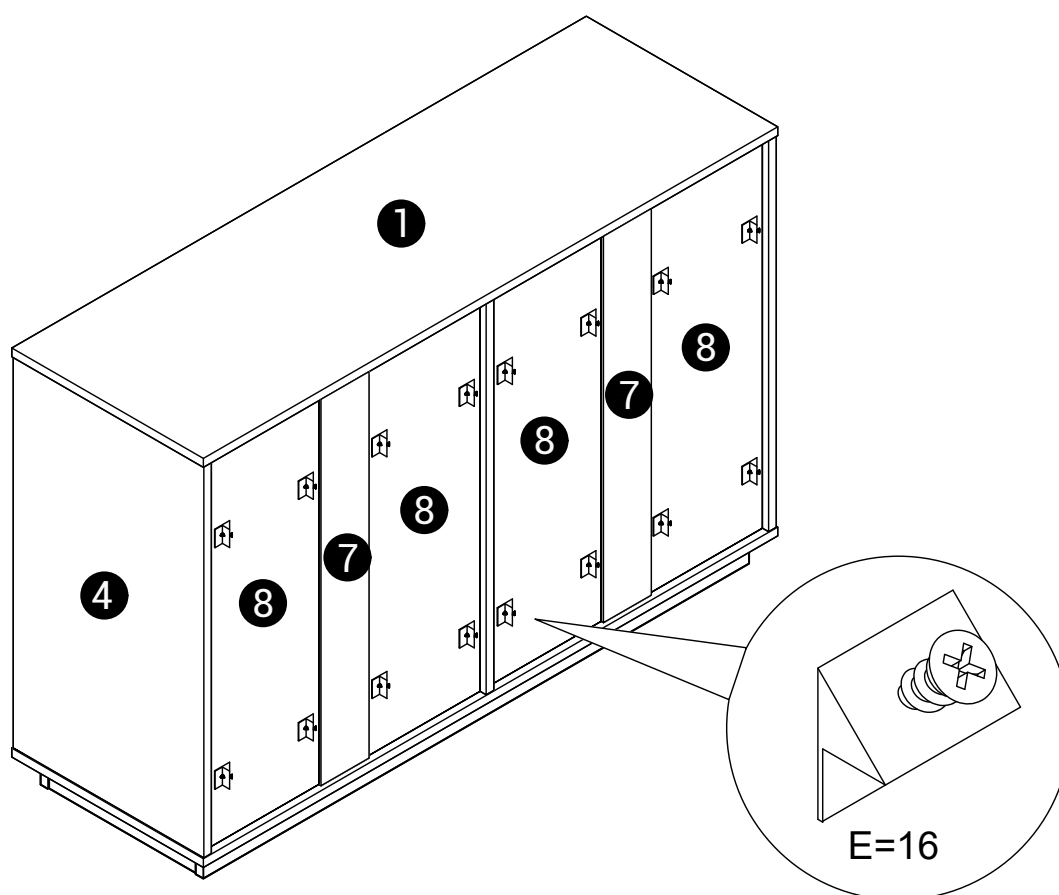
STEP 9



STEP 10

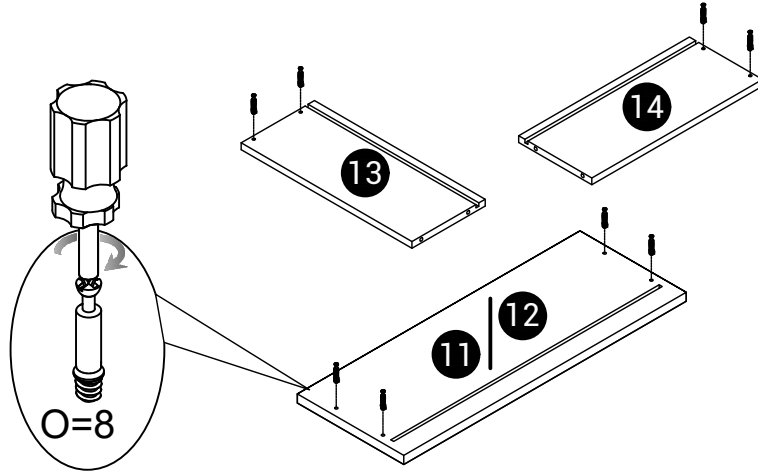


STEP 11

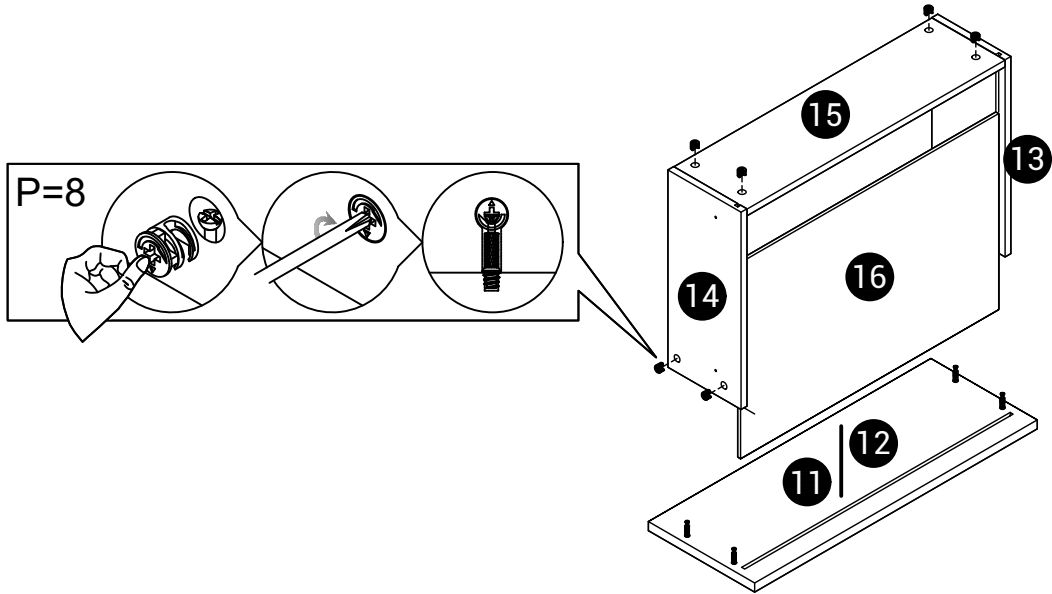


STEP 12

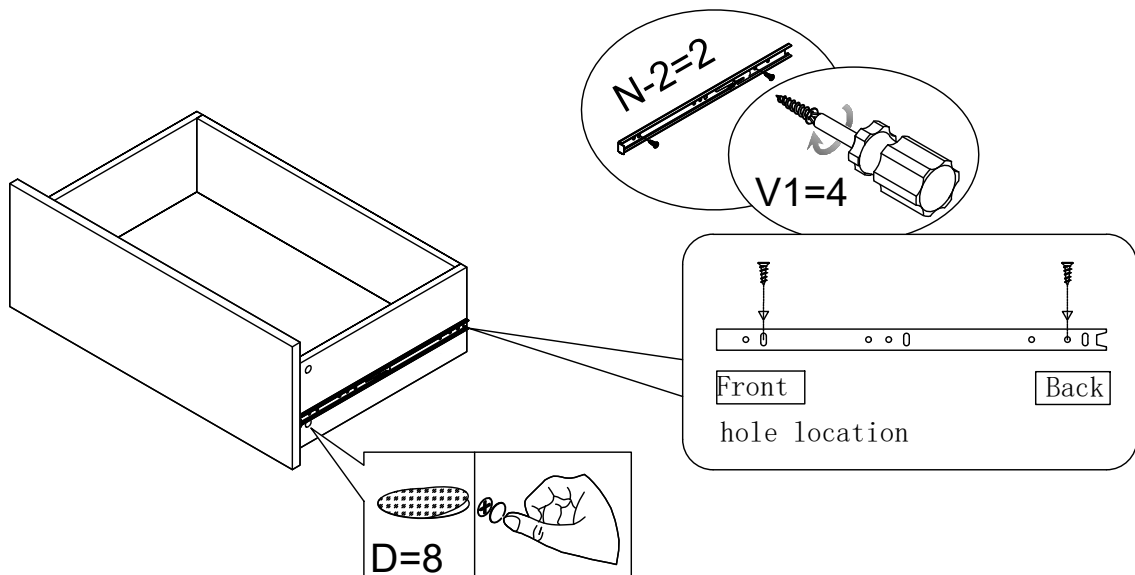
12-1



12-2

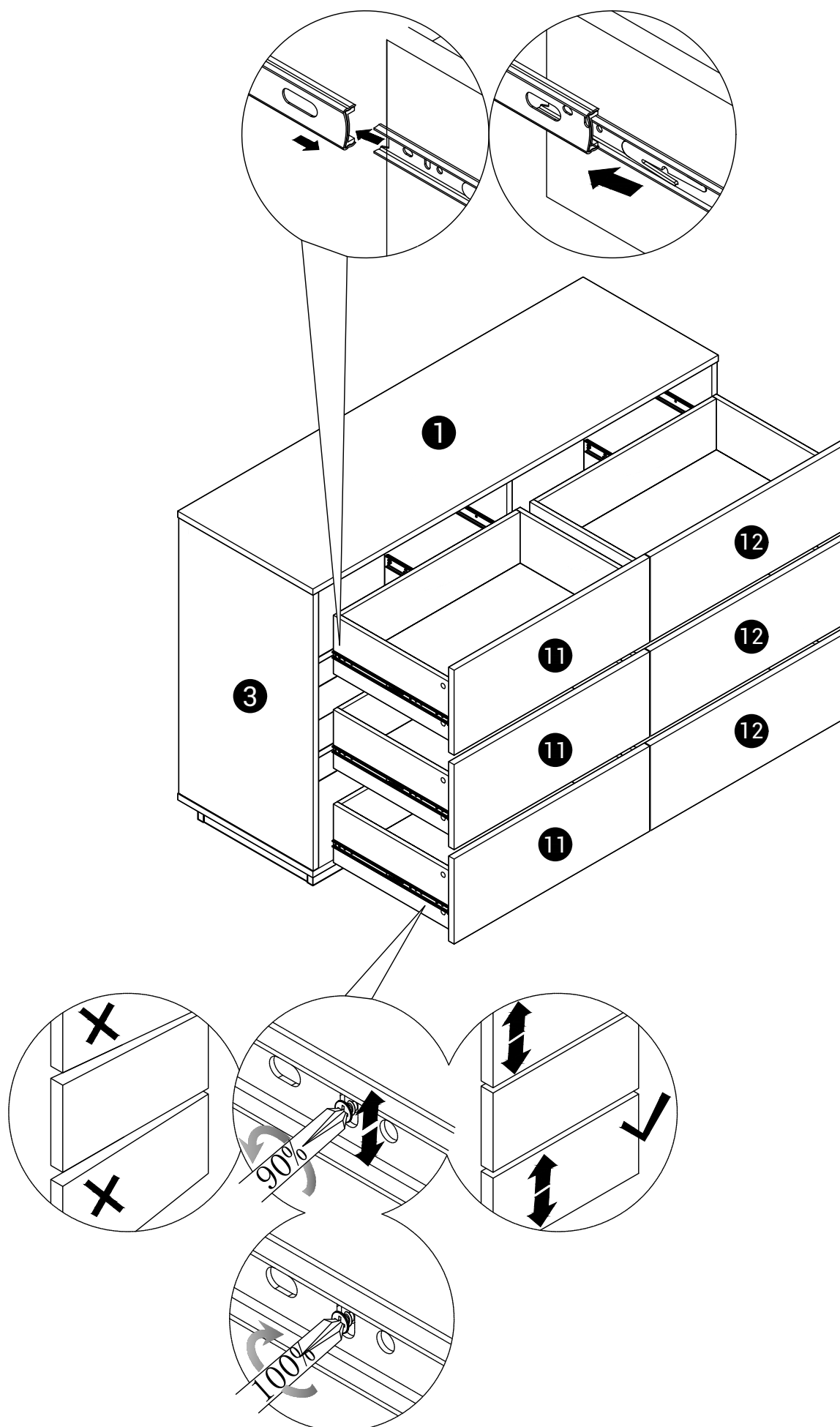


12-3

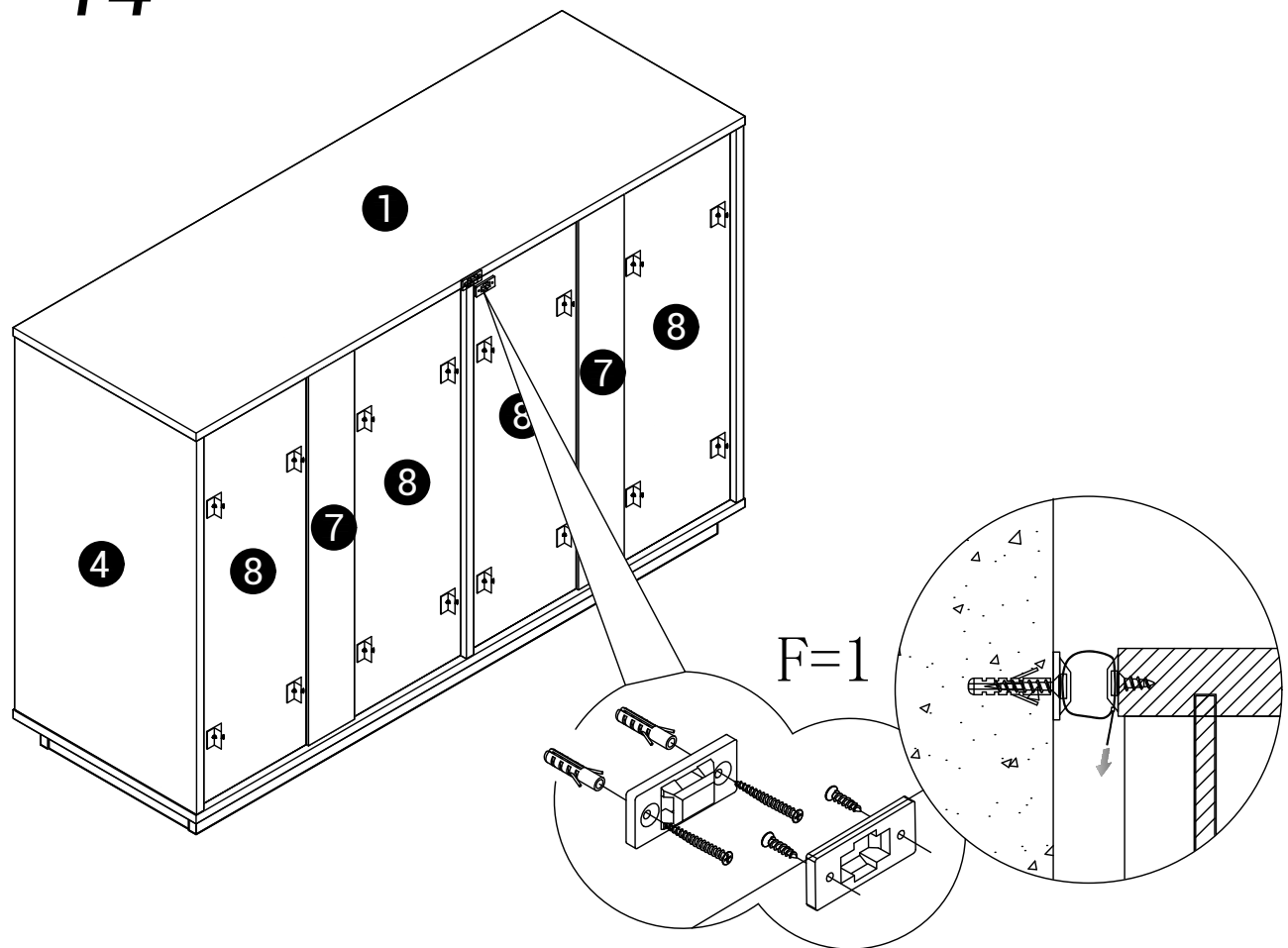


x6

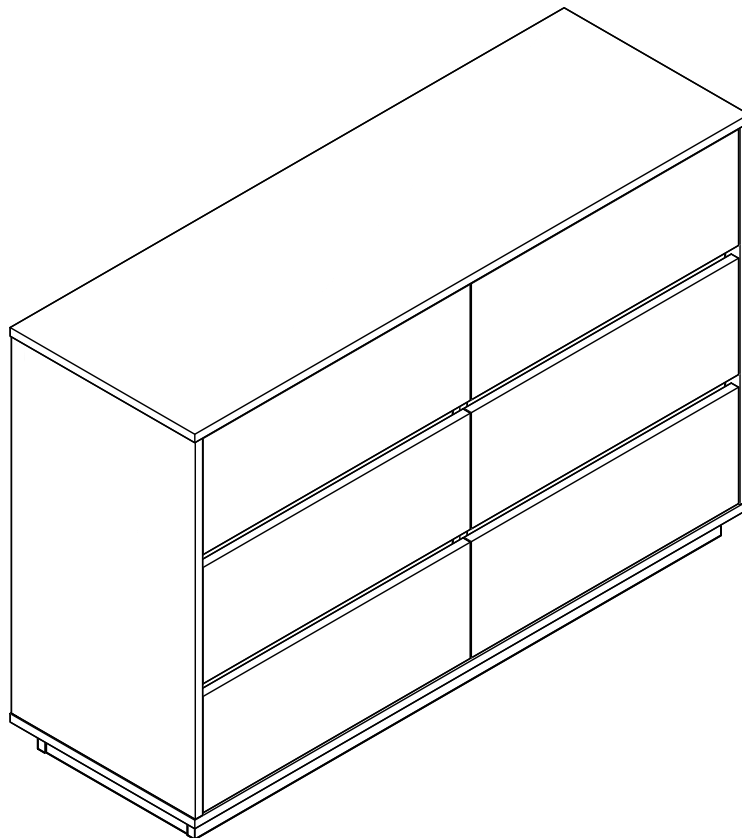
STEP 13



STEP 14



STEP 15



Finish