

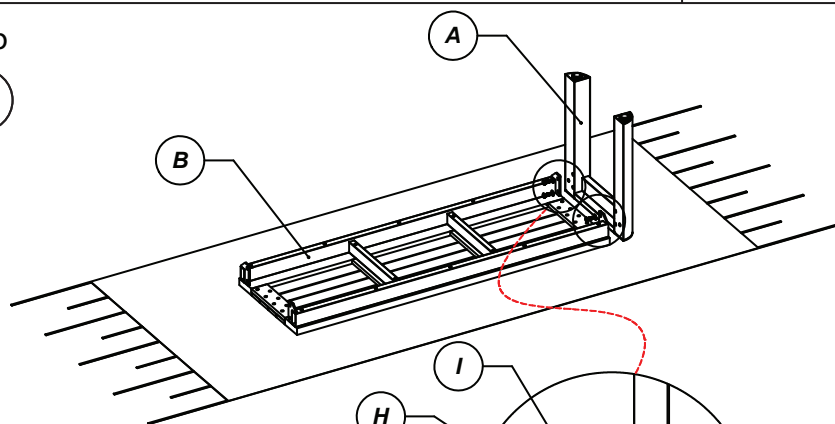
These instructions must be used to ease the assembly of your furniture. Please ensure that you have all the components before assembly. Remember to place the part on a carpeted floor or blanket in order to protect them from damage while you assemble.

Components

A Leg Frame Bench 04 pcs	B Bench Top 02 pcs	C Leg Frame Table 02 pcs
D Table Top 01 pc	E Metal Bar 02 pcs	F Bolt M6 x 20mm 04 pcs
G Washer 6.5 x 18 04 pcs	H Bolt M8 x 20mm 24 pcs	I Washer 8.5 x 18 24 pcs
J Allen Key 02 pcs	K Wooden Cap 01 pcs	

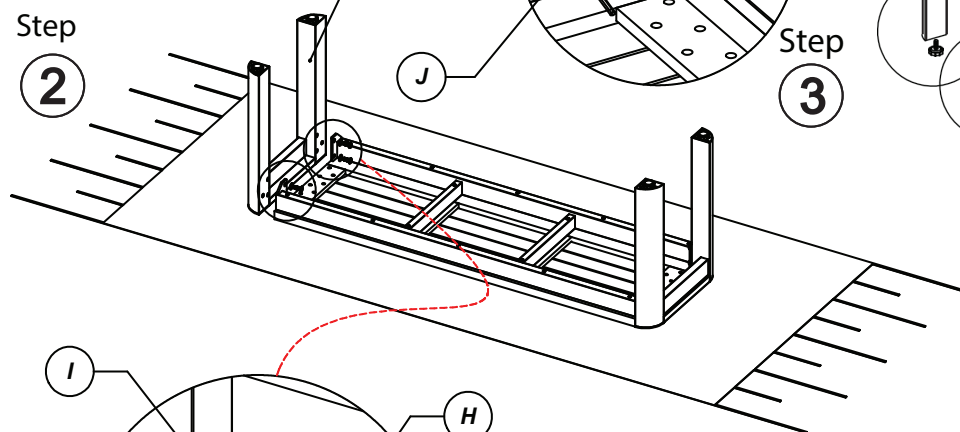
Step

1



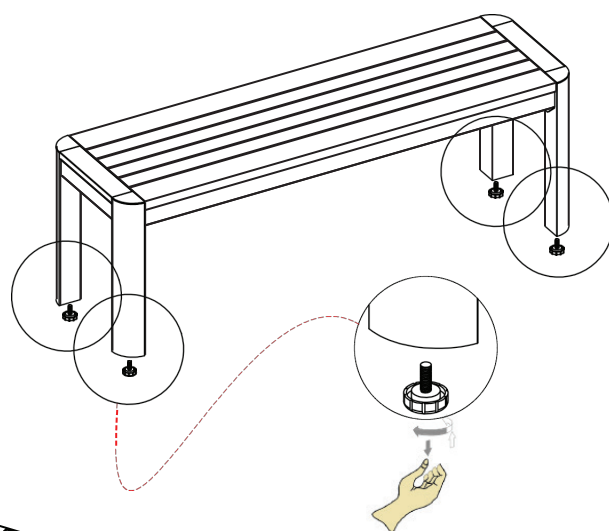
Step

2

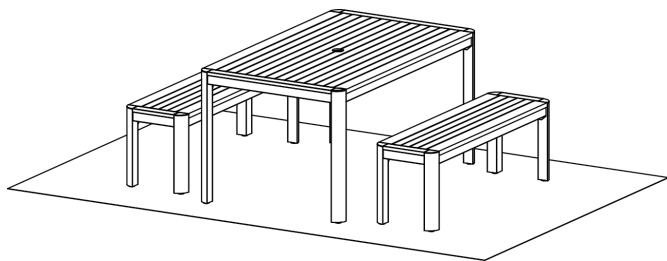


Step

3

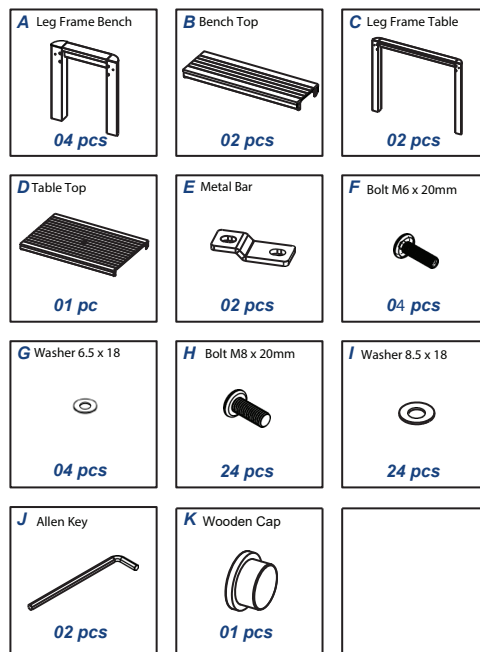


Finished



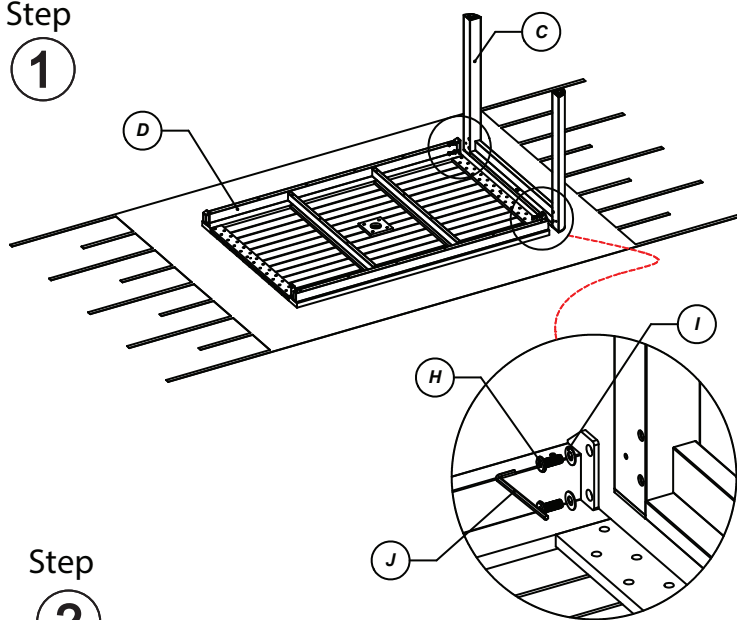
These instructions must be used to ease the assembly of your furniture. Please ensure that you have all the components before assembly. Remember to place the part on a carpeted floor or blanket in order to protect them from damage while you assemble.

Components



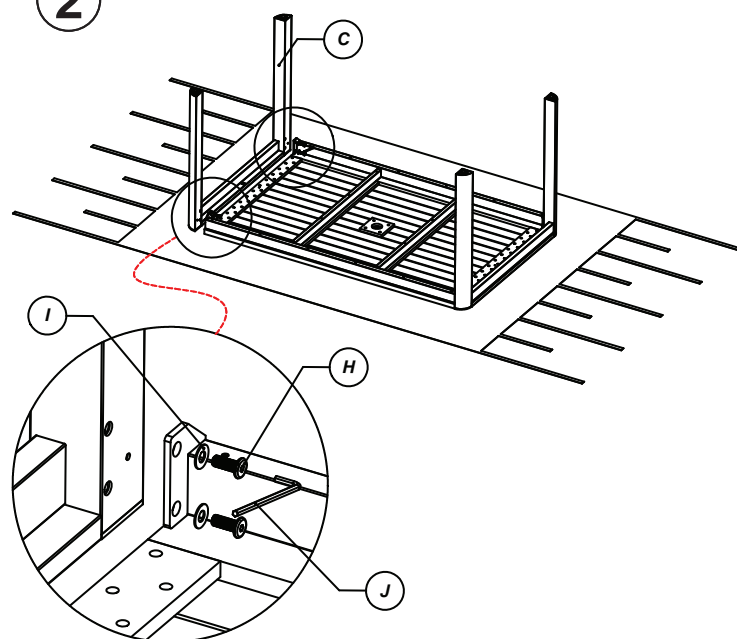
Step

1



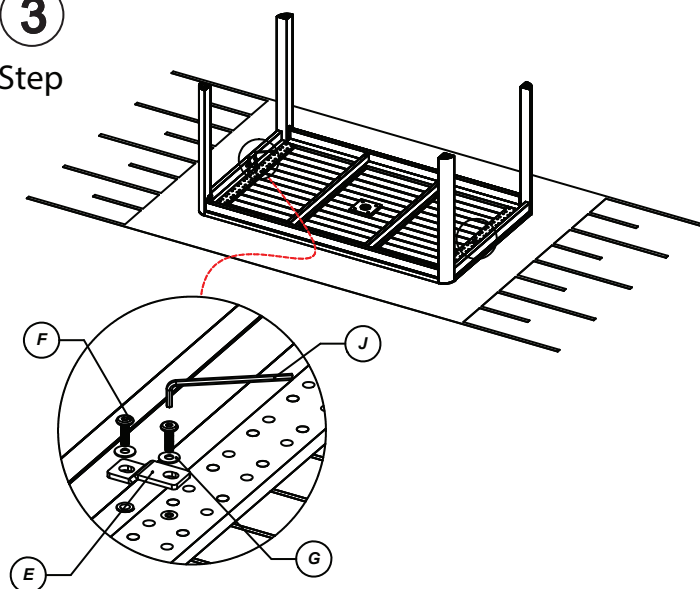
Step

2



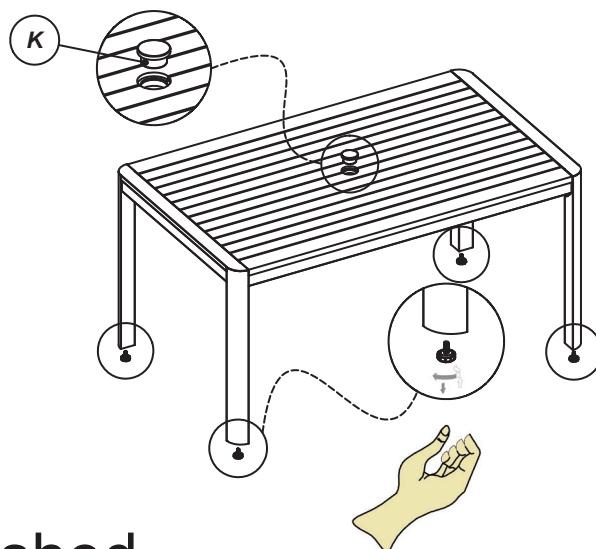
3

Step



Step

4



Finished